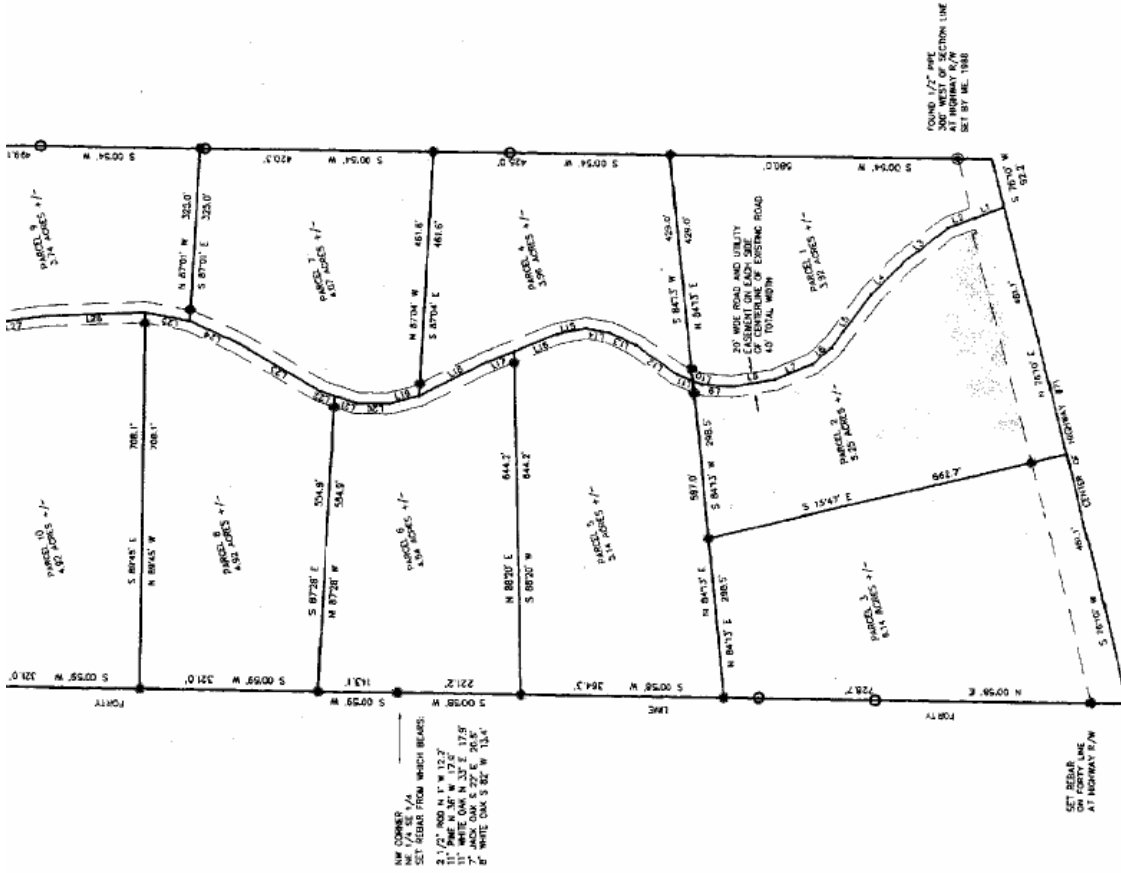


SET 1/2 INCH REB
AND CAP

FOUND MONUMENT;
ACCEPTED AS MON
EXTERIOR OF PARC

FOUND MONUMENT;
MARKS LINE FOR A



COURSES ALONG
CENTER OF EXISTING ROAD

| LINE | BEARING | DISTANCE | AREA |
|------|------------|----------|--------|
| L1 | N 89°55' W | 105.00 | 105.00 |
| L2 | N 89°55' W | 105.00 | 105.00 |
| L3 | N 89°55' W | 105.00 | 105.00 |
| L4 | N 89°55' W | 105.00 | 105.00 |
| L5 | N 89°55' W | 105.00 | 105.00 |
| L6 | N 89°55' W | 105.00 | 105.00 |
| L7 | N 89°55' W | 105.00 | 105.00 |
| L8 | N 89°55' W | 105.00 | 105.00 |
| L9 | N 89°55' W | 105.00 | 105.00 |
| L10 | N 89°55' W | 105.00 | 105.00 |
| L11 | N 89°55' W | 105.00 | 105.00 |
| L12 | N 89°55' W | 105.00 | 105.00 |
| L13 | N 89°55' W | 105.00 | 105.00 |
| L14 | N 89°55' W | 105.00 | 105.00 |
| L15 | N 89°55' W | 105.00 | 105.00 |
| L16 | N 89°55' W | 105.00 | 105.00 |
| L17 | N 89°55' W | 105.00 | 105.00 |
| L18 | N 89°55' W | 105.00 | 105.00 |
| L19 | N 89°55' W | 105.00 | 105.00 |
| L20 | N 89°55' W | 105.00 | 105.00 |
| L21 | N 89°55' W | 105.00 | 105.00 |
| L22 | N 89°55' W | 105.00 | 105.00 |
| L23 | N 89°55' W | 105.00 | 105.00 |
| L24 | N 89°55' W | 105.00 | 105.00 |
| L25 | N 89°55' W | 105.00 | 105.00 |
| L26 | N 89°55' W | 105.00 | 105.00 |
| L27 | N 89°55' W | 105.00 | 105.00 |
| L28 | N 89°55' W | 105.00 | 105.00 |
| L29 | N 89°55' W | 105.00 | 105.00 |
| L30 | N 89°55' W | 105.00 | 105.00 |
| L31 | N 89°55' W | 105.00 | 105.00 |
| L32 | N 89°55' W | 105.00 | 105.00 |
| L33 | N 89°55' W | 105.00 | 105.00 |
| L34 | N 89°55' W | 105.00 | 105.00 |
| L35 | N 89°55' W | 105.00 | 105.00 |
| L36 | N 89°55' W | 105.00 | 105.00 |
| L37 | N 89°55' W | 105.00 | 105.00 |
| L38 | N 89°55' W | 105.00 | 105.00 |
| L39 | N 89°55' W | 105.00 | 105.00 |
| L40 | N 89°55' W | 105.00 | 105.00 |
| L41 | N 89°55' W | 105.00 | 105.00 |
| L42 | N 89°55' W | 105.00 | 105.00 |
| L43 | N 89°55' W | 105.00 | 105.00 |
| L44 | N 89°55' W | 105.00 | 105.00 |
| L45 | N 89°55' W | 105.00 | 105.00 |
| L46 | N 89°55' W | 105.00 | 105.00 |
| L47 | N 89°55' W | 105.00 | 105.00 |
| L48 | N 89°55' W | 105.00 | 105.00 |
| L49 | N 89°55' W | 105.00 | 105.00 |
| L50 | N 89°55' W | 105.00 | 105.00 |
| L51 | N 89°55' W | 105.00 | 105.00 |
| L52 | N 89°55' W | 105.00 | 105.00 |
| L53 | N 89°55' W | 105.00 | 105.00 |
| L54 | N 89°55' W | 105.00 | 105.00 |